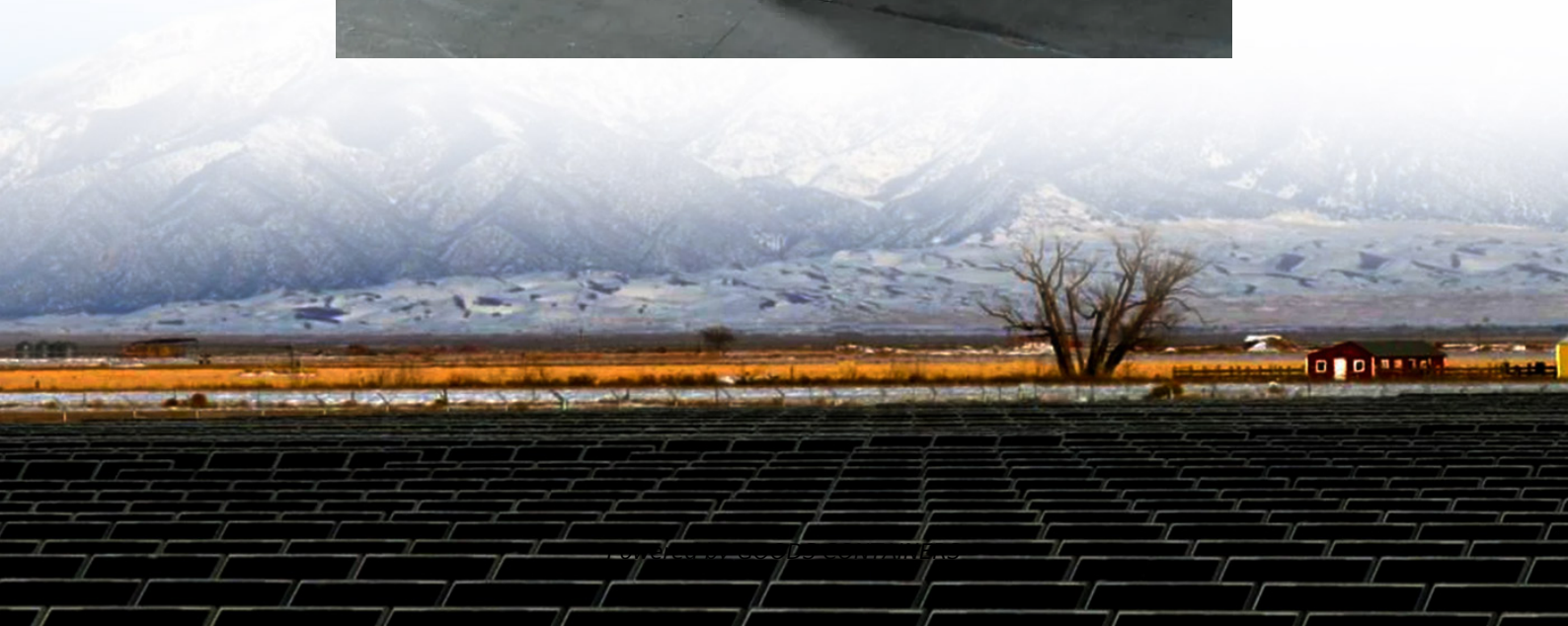


Solar panels connected to distribution box





Overview

What is solar panel junction box?

A solar panel junction box is a critical component of any solar energy system, allowing the safe connection between the photovoltaic (PV) panels and the rest of the electrical system.

How do I choose a solar panel junction box?

The junction box should be designed to work with the specific type of solar panel for which it was intended. It should also be compatible with charge controllers, inverters, and other components in the solar panel system. When using a solar panel junction box, it is paramount to prioritize safety considerations.

Where do you put a solar combiner box?

The solar combiner box should be located near the solar panels, typically on the roof or within a few feet of the solar array. This allows for shorter wire runs between the solar panels and the combiner box, which can reduce electrical losses and improve system efficiency.

Do you need a solar combiner box?

A solar combiner box is not always necessary, but it can be a very useful component in some solar panel systems. A combiner box is typically used when you have multiple solar panels that need to be connected together before being connected to the charge controller or inverter. Where do you put a solar combiner box?



Solar panels connected to distribution box



[Grid-Connected Distribution Box for Solar Power Systems](#)

A Grid-Connected Distribution Box is an electrical enclosure that houses and protects solar photovoltaic (PV) system components, such as inverters, combiners, and disconnect switches. ...

[Can a Power Distribution Box be used in solar power systems?](#)

Safety First One of the most important functions of a power distribution box in a solar power system is safety. Solar panels can produce a significant amount of electrical power, and if not ...

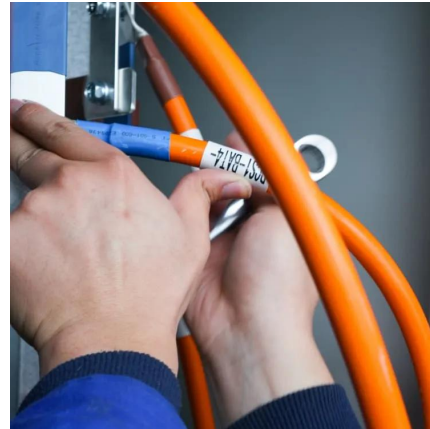


[How to connect a PV solar system to the ...](#)

The purpose of this article is to give you a basic understanding of the concepts and rules for connecting a solar panel system to the utility grid and the household electrical box or meter. The utility connection for a PV solar ...

[How to connect a PV solar system to the utility grid](#)

The purpose of this article is to give you a basic understanding of the concepts and rules for connecting a solar panel system to the utility grid and the household electrical box or meter. ...



Solar Panel Junction Box: Everything You Need to Know

Solar panel junction boxes are vital components of any solar energy system, providing necessary connections for the solar panels and other components of your system. ...



Solar Combiner Box Installation and Wiring Diagram

Proper grounding of solar panels and the solar combiner box is essential for safety and effective surge protection. Connect all metallic parts to the grounding busbar, then to the ...



Grid-Connected Distribution Box for Solar

A Grid-Connected Distribution Box is an electrical enclosure that houses and protects solar photovoltaic (PV) system components, such as inverters, combiners, and disconnect switches. It is an essential part of any grid ...



The Ultimate Guide to Solar Combiner Boxes: ...

B. Importance in solar power systems Efficiency: By streamlining connections and minimizing wiring, combiner boxes contribute to more efficient energy distribution within solar power systems. This ...

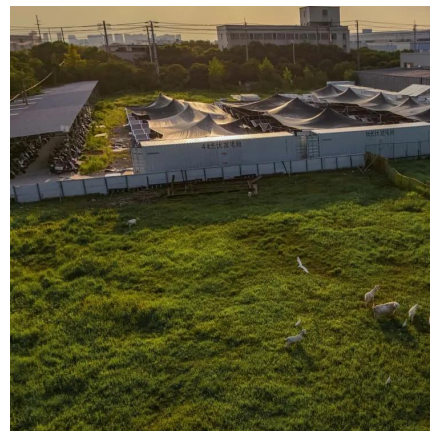


How to Wire Solar Panels to a Breaker Box Off Grid

Successfully integrating this complex system involves a detailed process of wiring components, starting from the solar array and culminating in the final connection to a ...

Case Study-The Importance of Distribution Boxes in Solar ...

Learn how distribution boxes play a crucial role in solar energy projects by connecting solar panels to the AC power grid, providing intelligent control and safety ...



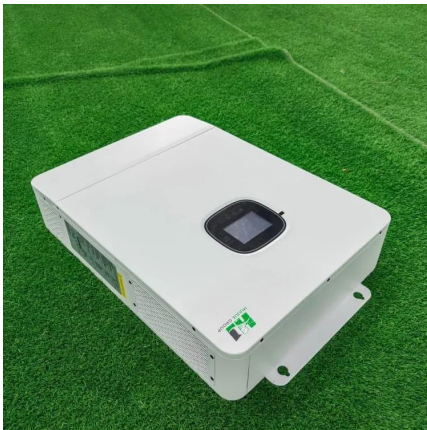
Solar Combiner Box Installation and Wiring ...

Proper grounding of solar panels and the solar combiner box is essential for safety and effective surge protection. Connect all metallic parts to the grounding busbar, then to the system ground with a rod or ...



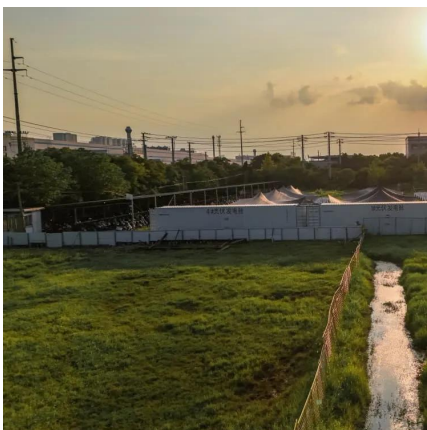
[Case Study-The Importance of Distribution ...](#)

Learn how distribution boxes play a crucial role in solar energy projects by connecting solar panels to the AC power grid, providing intelligent control and safety protection, and ensuring efficient electricity injection ...



[First, the Basic Concept of Grid-Connected Distribution ...](#)

First, the Basic Concept of Grid-Connected Distribution Box The grid-connected distribution box is a core component of a solar power station. It holds significant importance in converting, ...



[The Ultimate Guide to Solar Combiner Boxes: From Basics to ...](#)

B. Importance in solar power systems Efficiency: By streamlining connections and minimizing wiring, combiner boxes contribute to more efficient energy distribution within solar ...



[How To Wire A Solar Combiner Box Or Pass-Through Box?](#)

Are you installing a solar power system and wondering how to wire a pass-through box or combiner box? Properly connecting these components allows the power from your solar ...



[How To Wire A Solar Combiner Box Or Pass ...](#)

Are you installing a solar power system and wondering how to wire a pass-through box or combiner box? Properly connecting these components allows the power from your solar panels to be transferred to ...



[Solar Panel Junction Box: Everything You ...](#)

Solar panel junction boxes are vital components of any solar energy system, providing necessary connections for the solar panels and other components of your system. They also provide important safety ...

Contact Us

For catalog requests, pricing, or partnerships, please visit:
<https://woodgoods.pl>

Scan QR Code for More Information



<https://woodgoods.pl>