

# **Solar panels load-bearing requirements on roofs**





## Overview

---

Do new solar panels increase the load on a roof?

Even though new solar panels typically don't substantially increase the load on a roof, you may still need to have additional support added before installing them. The reason is again due to the difference between dead load and live load.

Can a residential roof support a solar panel system?

Most residential roofs can support solar panel systems, but calculating your roof's load capacity is a crucial step before installation begins. Understanding your roof's structural limitations isn't just about safety—it's also required for permits and can prevent costly structural damage down the road.

Do you need a roof check before installing solar panels?

A detailed roof check is needed before installing solar panels. Look at the roof's structure, age, and condition. Fix any issues to ensure it can hold the solar system. Discover essential roof requirements for solar panels. Learn about pitch, load capacity, and materials to ensure your home is ready for a solar energy system.

Why does a solar panel installation decrease the live load capacity?

The reason is again due to the difference between dead load and live load. The solar panel installation will increase the dead load on the roof, which results in a decrease in its live load capacity.



## Solar panels load-bearing requirements on roofs



### What are the load-bearing requirements for ...

The structural load of solar panels refers to the weight and forces a solar system exerts on a building or structure. This can include the weight of the panels, mounting system, and other ...

### Structural Requirements for Solar Panels

-- ...

Structural Requirements for Solar Panels: Essential Factors to Consider Honestly, you can't just buy a stack of solar panels, toss them on a roof, and expect a smooth ride. That whole system--the panels, the ...



### **How do you determine if a roof can handle the weight of solar panels?**

Understanding Roof Structure and Load Capacity To effectively determine if a roof can support solar panels, a comprehensive understanding of the roof's structural composition ...

### 7 Steps to Calculate Roof Load Capacity for ...

Your roof's age directly impacts its load-bearing capacity. Newer roofs (built after 2000) typically follow stricter building codes with higher load requirements than older structures. Identify your



roof's framing ...



### What Solar Installers Should Know About Roof Load Capacity

Roof Type and Configuration: Different roof types, such as flat roofs, pitched roofs, and metal roofs, have varying load-bearing capacities. Solar Installers must assess the ...

### 7 Steps to Calculate Roof Load Capacity for Solar Panels ...

Your roof's age directly impacts its load-bearing capacity. Newer roofs (built after 2000) typically follow stricter building codes with higher load requirements than older ...



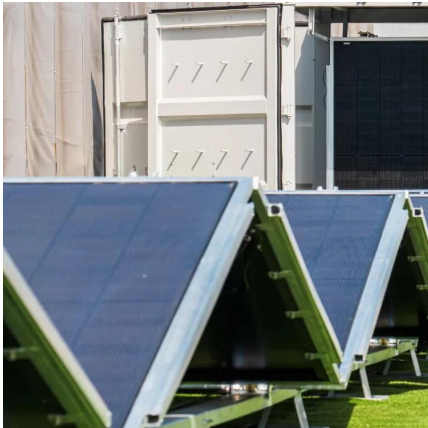
### 2025 code shifts: ASCE 7 and Eurocode rules ...

As solar energy becomes a mainstream component of our power infrastructure, the standards governing its safe installation are becoming more rigorous. For installers, engineers, and property owners, ...



## 2025 code shifts: ASCE 7 and Eurocode rules for PV roof loads

As solar energy becomes a mainstream component of our power infrastructure, the standards governing its safe installation are becoming more rigorous. For installers, engineers, ...



## Structural Requirements for Solar Panels -- Exactus Energy

Structural Requirements for Solar Panels: Essential Factors to Consider Honestly, you can't just buy a stack of solar panels, toss them on a roof, and expect a smooth ride. That ...

## What Solar Installers Should Know About

...

Roof Type and Configuration: Different roof types, such as flat roofs, pitched roofs, and metal roofs, have varying load-bearing capacities. Solar Installers must assess the specific characteristics of each roof to ...



## **Roof Load Distribution Calculations for Solar Panel Structural ...**

This innovation decreases the overall load on the roof, which is essential for ensuring the structural safety of older or weaker roofs. For instance, thin-film solar panels ...



## [Assessing Your Roof's Load-Bearing Capacity for Solar Panels](#)

For flat roofs, the recommended load-bearing capacity for solar panels typically involves direct assessment of the roof structure's ability to support the added weight.



## Contact Us

---

For catalog requests, pricing, or partnerships, please visit:  
<https://woodgoods.pl>

## Scan QR Code for More Information



<https://woodgoods.pl>