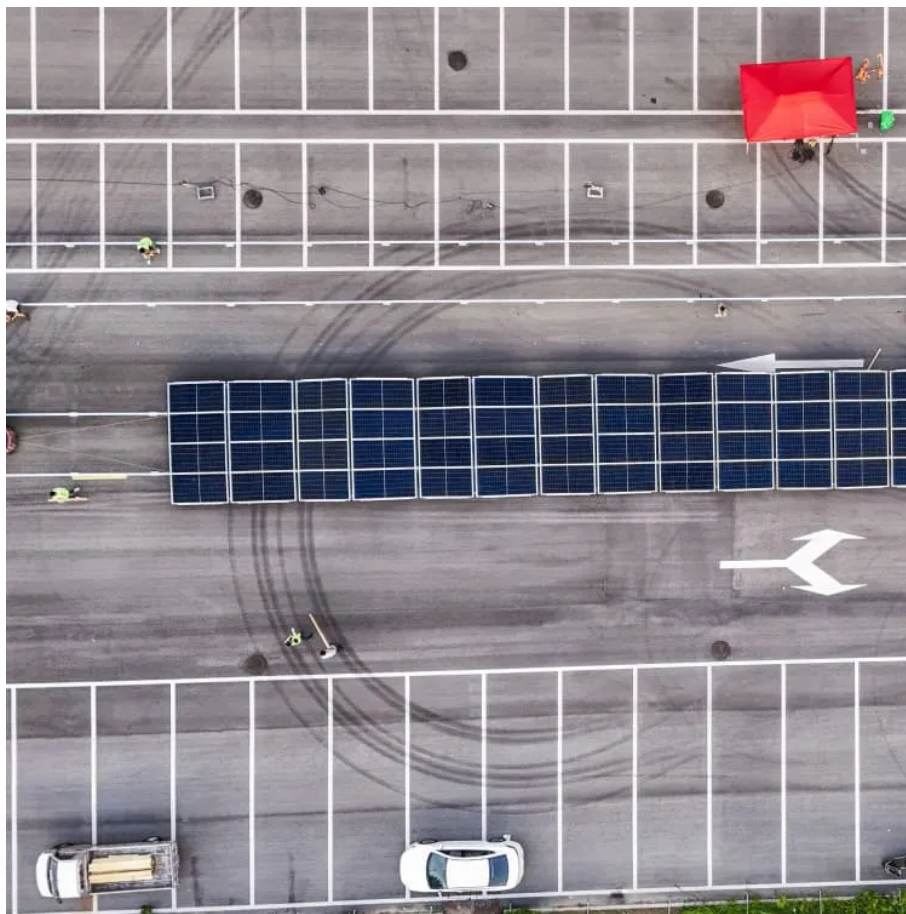


Stepped sine wave inverter





Overview

What is a pure sine wave inverter?

Pure sine wave inverter: It produces a smooth, continuous waveform that closely resembles the AC power provided by the utility grid. The waveform is a true sine wave with a smooth and rounded shape. Modified sine wave inverter: It produces a waveform that is more like a stepped approximation of a sine wave.

What is a modified sine wave inverter?

The modified sine wave inverter realizes waveform control by controlling the conduction and cut-off time of switching elements such as thyristors and transistors. Pure sine wave inverter: It produces a smooth, continuous waveform that closely resembles the AC power provided by the utility grid.

What type of inverter is used to produce a sine wave?

Combination of pulses of different length and voltage results in a multi-stepped modified square wave, which closely matches the sine wave shape. The low frequency inverters typically operate at ~60 Hz frequency. To produce a sine wave output, high-frequency inverters are used.

What is the output current waveform of a pure sine wave inverter?

The output current waveform of a pure sine wave inverter is of high quality and can achieve low harmonic distortion when interfaced with a grid power supply.



Stepped sine wave inverter



[Stepped Sinewave Inverter , IEEE Journals & Magazine , IEEE ...](#)

A stepped sinewave dc/ac inverter was analyzed for an inductive load with respect to load current and voltage, harmonics, power factor, and efficiency. This special inverter of high efficiency ...

[Pure Sine Wave vs. Modified Sine Wave Inverters: Which One ...](#)

Sep 15, 2025 · In contrast, a modified sine wave inverter (also called a quasi-sine wave inverter) produces a "stepped" or "square-like" waveform. Instead of a smooth curve, it alternates ...



What are the Differences: Pure Sine Wave Inverter vs Modified Sine Wave

Oct 12, 2024 · Modified sine wave inverter: It produces a waveform that is more like a stepped approximation of a sine wave. The waveform has a blocky, stepped shape that is less smooth ...

[The differences between sine wave UPS and square wave UPS](#)

On-line UPS power supply bypass output is pure sine wave: In normal mode (A) : the output of municipal electricity after passing through the inverter is an impure sine wave; Battery mode ...



[Modified vs Pure Sine Wave Inverters: Real-World](#)

Apr 17, 2025 · Among the most common types of inverters are pure sine wave and modified sine wave models. On paper, the differences might seem technical or minor. But in real-life use, ...



Stepped output voltage waveform and its comparison with the sine wave

Download scientific diagram , Stepped output voltage waveform and its comparison with the sine wave from publication: A Nine-Level Cascaded Multilevel Inverter with Reduced Switch Count ...



[Pure Sine Wave Inverters vs. Modified Sine Wave Inverters: A](#)

Jun 23, 2025 · In contrast, a modified sine wave inverter produces a stepped waveform that approximates a sine wave but consists of distinct voltage levels. It typically features a square ...





Contact Us

For catalog requests, pricing, or partnerships, please visit:
<https://woodgoods.pl>

Scan QR Code for More Information



<https://woodgoods.pl>