

# The function of circuit breaker in UPS battery cabinet





## Overview

---

The UPS is interfaced to the Battery Circuit Breaker (BCB) control board using input contacts to retrieve the status of the external switches/breakers and an output contact used to send the trip signal to remotely open the battery circuit breaker. How does a battery circuit breaker work?

The UPS is interfaced to the Battery Circuit Breaker (BCB) control board using input contacts to retrieve the status of the external switches/breakers and an output contact used to send the trip signal to remotely open the battery circuit breaker.

What is an uninterruptible power system (UPS)?

Uninterruptible power system (UPS) (1) An electrical system designed to provide instant, transient-free backup power during power failure or fault. Some UPSs also filter and/or regulate utility power (line conditioning). (2) A Device whose sole purpose is to save your equipment, your data and your job. User replaceable.

What is a DC rated battery circuit breaker (BCB)?

These can be equipped with a monitoring device connected to the UPS or BMS to warn if a fuse has tripped or is disconnecting the battery from the UPS. The DC rated Battery Circuit Breaker (BCB) provides still overcurrent protection, if correctly coordinated, even though it is not as fast as the fuses.

What is a Battery breaker setting?

The concerned “setting” is the magnetic or instantaneous level, that is usually given adjustable in % of the nominal current. Battery circuit breakers can be equipped with a monitoring device connected to the UPS or BMS to warn if the breaker tripped.



## The function of circuit breaker in UPS battery cabinet

---



[How does a UPS system work? . Schneider Electric USA](#)

Jul 23, 2025 · Battery Operation Mode is used when the utility/mains supply fails, the UPS transfers to battery operation with zero transferring time and supports the load with ...

### [Understanding The Main Components of Your UPS](#)

What Are The Main Components of A Ups?Why You Need to Know The Components of Your UpsUps BatteriesOverview of ATS, Rectifiers, and InvertersOther Ups ComponentsUps Maintenance Services from Unified PowerAs complex devices tasked with ensuring clean power and continuous uptime to your critical load, uninterruptible power systems (UPSs) are comprised of a variety of critical components that wear out during normal operations. Left unchanged, these parts are subject to failure. Understanding how the key elements of your UPS work -- as well as the impo See more on unifiedpowerusa Schneider Electric Community



### **Solved: What is a circuit breaker and how it works?**

Jun 28, 2021 · APC UPS Data Center & Enterprise Solutions Forum Schneider, APC support forum to share knowledge about installation and configuration for Data Center and Business ...

[DESIGN FOR SAFE AND RELIABLE ELECTRICAL ...](#)

Jan 23, 2019 · The UPS is interfaced to the



Battery Circuit Breaker (BCB) control board using input contacts to retrieve the status of the external switches/breakers and an output contact ...

[UNDERSTANDING UPS SYSTEMS AND BATTERIES](#)

Jul 17, 2024 · Battery types Batteries are available in a range of technologies, including lead-acid, nickel- cadmium, lithium ion, lithium-sulfur, aluminum-ion, nickel-metal, and more. Of all these, ...



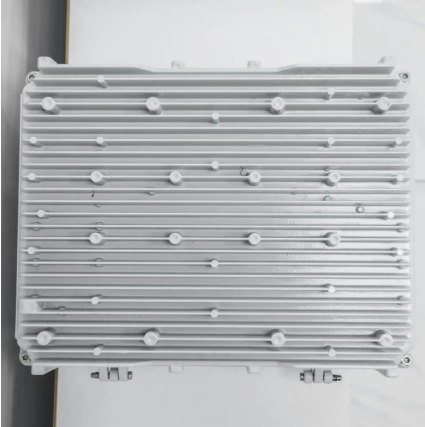
[Switching & Protection solutions for Battery Racks in ...](#)

Mar 23, 2024 · A Battery Rack is a cabinet where more battery mod-ules are installed in series to reach the system rated voltage. In addition to the batteries, switching and protective devices ...

[Recommended use of LSIG-equipped circuit breakers in ...](#)

Aug 26, 2024 · Background LSIG (long time, short time, instantaneous, ground) -equipped circuit breakers are often required by code in the application of larger UPS systems. Specifically, ...





### [Eaton 9395 Maintenance Bypass Module 275 kVA and ...](#)

Aug 31, 2024 · Introduction The Eaton® 9395 Maintenance Bypass Module (MBM) is designed for use with the Eaton 9395 225-550 kVA three-phase uninterruptible power supplies. The MBM ...

### [Solved: What is a circuit breaker and how it works?](#)

Jun 28, 2021 · APC UPS Data Center & Enterprise Solutions Forum Schneider, APC support forum to share knowledge about installation and configuration for Data Center and Business ...



### **Breaking Down the Key Components of UPS Systems and Their Functions**

May 30, 2025 · Discover the essential UPS components--batteries, rectifiers, inverters, bypass switches, and monitoring systems--that protect critical infrastructure from power outages. ...

## **Contact Us**

---

For catalog requests, pricing, or partnerships, please visit:  
<https://woodgoods.pl>



## Scan QR Code for More Information



<https://woodgoods.pl>