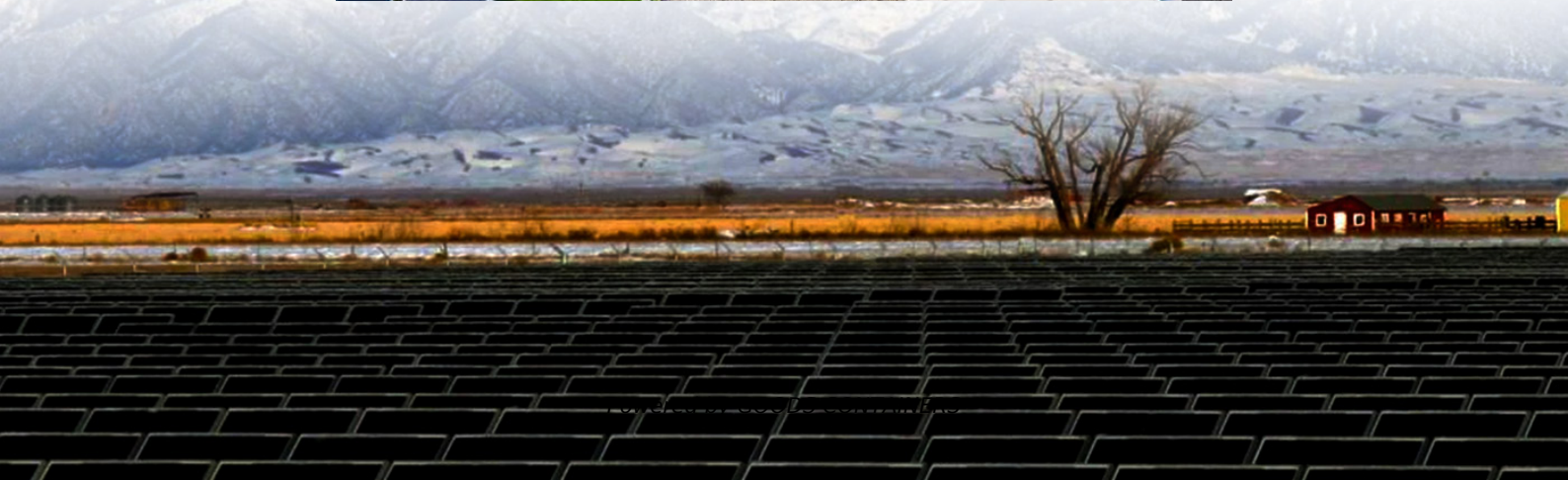


# **The relationship between energy storage power stations and battery swap stations**





## Overview

---

Why do electric vehicles need battery swapping stations?

Electric vehicles face significant energy supply challenges due to long charging times and congestion at charging stations. Battery swapping stations (BSSs) offer a faster alternative for energy replenishment, but their deployment costs are considerably higher than those of charging stations.

Are battery swapping stations a good alternative to charging stations?

Battery swapping stations (BSSs) offer a faster alternative for energy replenishment, but their deployment costs are considerably higher than those of charging stations. As a result, selecting optimal locations for BSSs is crucial to improve their accessibility and utilization.

What are battery swap stations & how do they work?

Battery swap stations (BSSs) present a promising approach to getting EVs recharged within a quite short time. Attempts have also been made to deploy BSSs for some EV types, such as electric taxis, electric buses, and freight EVs.

How does active distribution network affect battery-transferable switching stations (btsss)?

Active Distribution Network curtailment batteries via the traffic network, and this extends the capacity of Battery-Transferable Swapping Stations (BTSSs). First, the operational principles of the energy storage shared BTSS are carefully analyzed, including external and internal control mechanisms and energy storage sharing.



## The relationship between energy storage power stations and batter



### Deploying battery swap stations for shared electric vehicles using

This paper proposed a novel Station-to-Point (S2P) Battery Swap Mode for Shared Electric Vehicles (SEVs), under which Battery Swap Stations (BSSs) have dedicated delivery ...

### Electric vehicle battery swap stations: an overview and critical ...

Growing the need for effective, large-scale, and easy charging facilities has been induced by the success of electric vehicles (EVs). Battery Swap Stations (BSS) are one of the ...



### WHAT ARE BATTERY SWAP STATIONS

The relationship between battery swap stations and energy storage stations Swapping techniques, optimal location for BSS, and battery life are specifically related to individual BSS ...

### Strategies and sustainability in fast charging station ...

Renewable resources, including wind and solar energy, are investigated for their potential in powering these charging stations, with a simultaneous exploration of energy ...



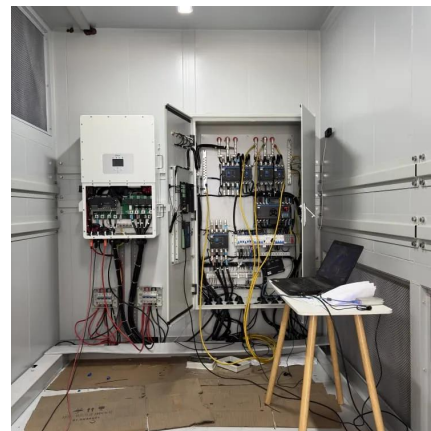
### Collaborative optimization of electric-vehicle battery ...

Energy storage sharing: The concept of energy storage sharing between battery-transferable swapping stations (BTSSs), in which empty or fully charged batteries are ...



### The relationship between battery swap stations and ...

The relationship between battery swap stations and energy storage stations What is battery swapping station (BSS)? Battery Swapping Station (BSS) proposes an alternative way of ...



### Swap Stations as Energy Storage Stations: The Future of Power

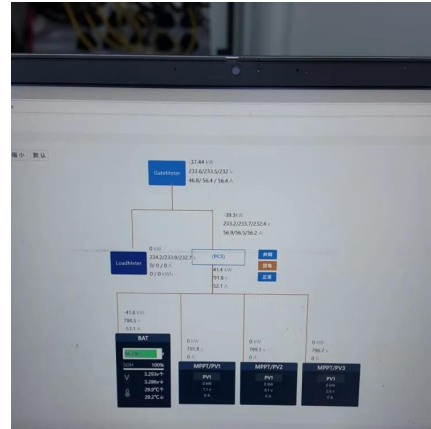
Imagine this: You pull into a swap station to change your EV's battery, but instead of just swapping, your old battery becomes part of a giant energy storage system powering ...





## Battery swapping station location for electric vehicles: a ...

Electric vehicles face significant energy supply challenges due to long charging times and congestion at charging stations. Battery swapping stations (BSSs) offer a faster ...



## Energy storage system for battery swap stations

Battery energy storage stations (BESS) can be used to suppress the power fluctuation of DG and battery charging, as well as promoting the consumption capacity of DG [9 ...

## Contact Us

---

For catalog requests, pricing, or partnerships, please visit:  
<https://woodgoods.pl>

**Scan QR Code for More Information**



<https://woodgoods.pl>