

Three-phase folding containers used at Bustel Port Terminal





Overview

What is a container terminal?

A container terminal is a specialized terminal facility that handles the transshipment, storage, and temporary storage of containers between at least two transportation modes.

How are container movements handled at a terminal?

Handling container movements at a terminal involves three segments along a continuum, which are maritime operations, yard operations, and hinterland connectivity. Concerning maritime operations, ship turnaround times are expected to be short, and the terminal must accommodate the schedule integrity of shipping lines.

What equipment does a container terminal use?

A container terminal relies on an array of intermodal equipment to perform its operations, including straddle carriers, gantry cranes, and portainers (ship-to-shore cranes). The choice of equipment and its mix is influenced by several factors, including capital investment, volume, stacking density, and productivity. Forklift.

Are there problems in container terminals?

The growth of containerization and transporting goods in containers has created many problems for ports. In this paper, we systematically survey a literature over problems in container terminals. The operations that take place in container terminals are described and then the problems are classified into five scheduling decisions.



Three-phase folding containers used at Bustel Port Terminal



[Automated container handling in port terminals](#)

Nov 6, 2012 · Shipping containers revolutionized the movement of goods, driving change and efficiency throughout the global supply chain. The next revolution in container handling is the ...

[Foldable shipping containers an answer to port congestion?](#)

Feb 9, 2023 · Are shipping containers outdated? The intermodal shipping container is 70 years old. Over the years it has been refined but ownership costs have increased. For example, this ...



[Foldable shipping containers an answer to port congestion?](#)

Your Professional background?What Causes 'Empty Running'?Who Inspires You?Empty containers clog roads and ship terminals, causing port congestion and leaving little space to unload ships. This then forces many ships to wait offshore, wasting resources and slowing the supply chain to a crawl. The problem disappears only as the ships sail away.See more on supplychaindigital Author: Sean AshcroftThe Geography of Transport Systems[PDF]

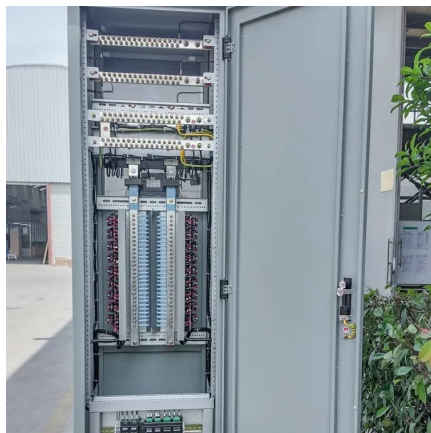
Chapter 6 -Transport Terminals

May 19, 2024 · The contents of this document can be freely used for personal or classroom use ONLY. Although the material contained in this document is freely available, it is not public ...



[Equipment and Operations in Container Port Terminal](#)

Sep 9, 2015 · The growth of containerization and transporting goods in containers has created many problems for ports. In this paper, we systematically survey a literature over problems in ...



[Chapter 6.5 - Container Terminal Design and Equipment](#)

1 day ago · A container terminal is a specialized terminal facility that handles the transshipment, storage, and temporary storage of containers between at least two transportation modes. They ...

[Container Terminals Automation-Final Report-63](#)

Oct 5, 2023 · Abstract This study focuses on the automation of terminal equipment used to handle containers. A distinction is made between semi-automated terminals, which have manned ...



[Design and Cost-Effectiveness of 5-Tier Foldable Container](#)

Feb 19, 2022 · This paper presents the design of a new 5-tier stacking foldable container with convenient folding and unfolding process and that can be produced economically compared to ...



Contact Us

For catalog requests, pricing, or partnerships, please visit:
<https://woodgoods.pl>

Scan QR Code for More Information



<https://woodgoods.pl>