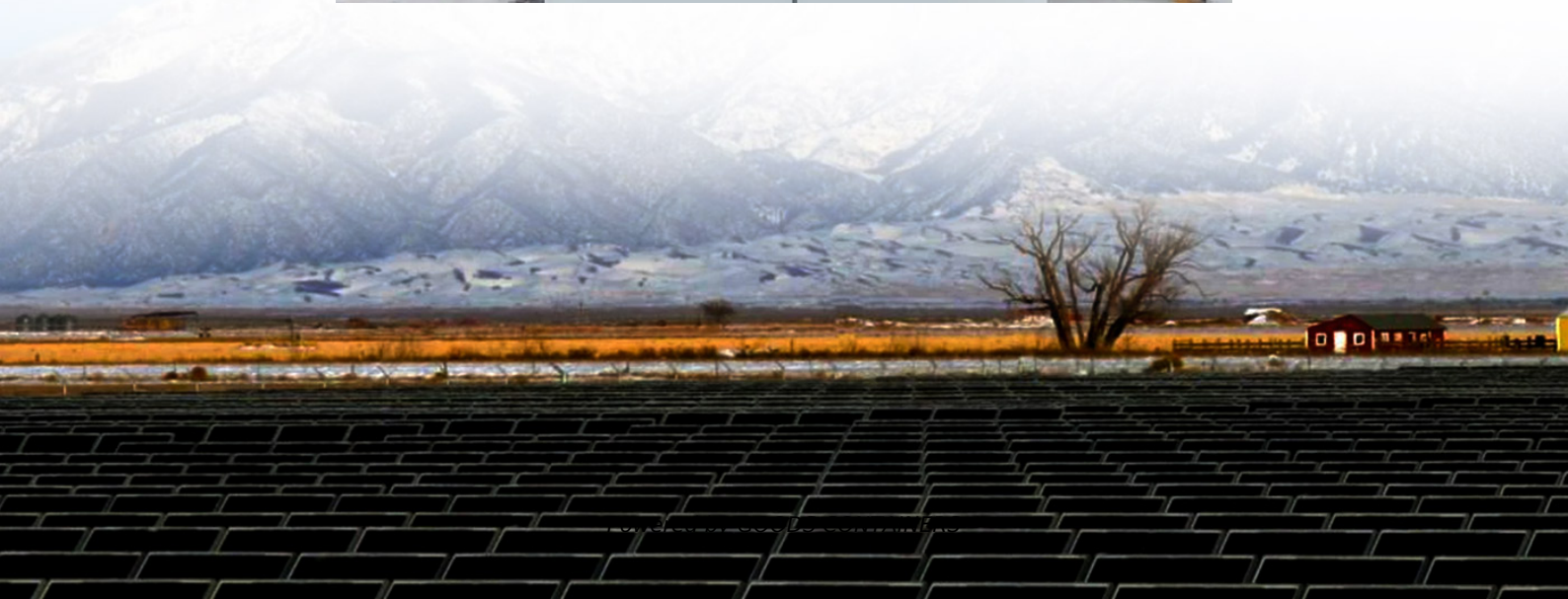


Tool batteries used in parallel





Overview

What is a parallel battery system?

This creates a parallel system that keeps the voltage the same across all batteries (e.g., a 12-volt battery bank stays at 12 volts) while combining the capacities of the individual batteries. This method is widely used in applications requiring longer runtime without increasing voltage, such as in solar systems, RVs, and backup power setups.

How do I minimize risks when creating a parallel battery setup?

To minimize risks when creating a parallel battery setup, follow these safety tips: **Use Identical Batteries:** Always use batteries of the same type, capacity, and state of charge to avoid imbalances. **Check Voltage and Charge Levels:** Ensure all batteries are at the same voltage and fully charged before connecting them.

Can a 12V battery be used in parallel?

It goes without saying (but we'll say it anyway) that you must not mix voltages or chemistries of batteries. If you run a 12v system, only use 12v batteries. The terminal voltage of each battery should also be almost identical when putting in parallel. A difference of 0.1v is ok in most circumstances.

How to connect batteries in parallel?

Step1. Plan the parallel battery connection diagram Step2. Size wire to connect batteries in parallel Step3. Balance the batteries before connecting them in parallel Step4. Finish the batteries parallel connection How many batteries can I safely connect in parallel?

Can I mix LiFePO4 and lead acid in parallel?



Tool batteries used in parallel

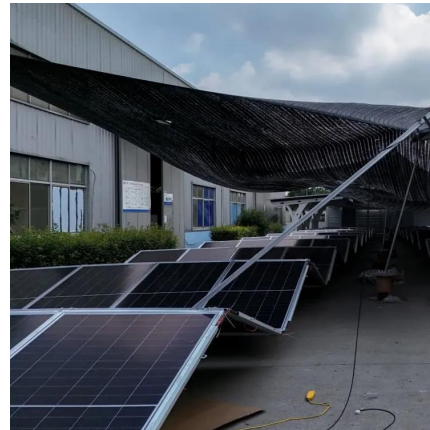


[A Guide to Using Parallel Batteries: A Comprehensive ...](#)

Sep 19, 2025 · In applications like electric motors and power tools, parallel connections meet high-power demands. Redundancy Design: If one battery fails, others continue to supply ...

[Connecting batteries in parallel - BatteryGuy ...](#)

May 3, 2024 · With secondary (rechargeable) batteries - only use batteries of the same brand and age and make sure all the units are fully charged before connecting them together in parallel.



[Connecting \(And Using\) High-Capacity Batteries In Parallel](#)

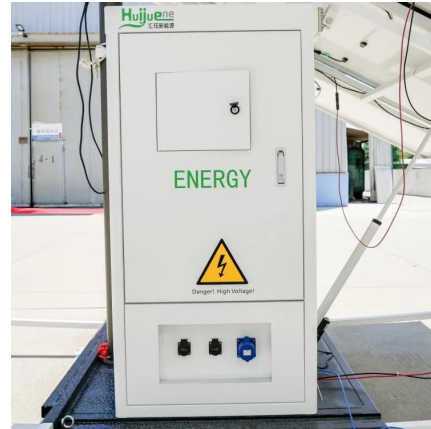
May 27, 2024 · The problem with using different battery packs in parallel is that unless the batteries are charged to similar voltages, they could generate a very high and potentially ...

[How to Increase Battery Capacity with Batteries in Parallel](#)

Apr 18, 2025 · Connecting batteries in parallel is an effective method to increase overall capacity while maintaining voltage levels; this approach is



particularly beneficial for applications ...



Paralleling batteries... Some do's, don'ts and hints...

Sep 9, 2024 · The batteries should also be fully charged individually, and left to "settle" for 12+ hours before placing them in parallel. This helps reduce the chances of significant current flow ...



Using two "tool batteries" in parallel

Feb 22, 2024 · I have built a Bluetooth speaker, which is currently powered by a single 18V "drill battery" (Bosch BAT609 battery, to be exact - each pack has 5 lithium ion cells, and I assume, ...



Can I Parallel Two Different Lithium Batteries? Understanding ...

5 days ago · Connecting lithium batteries in parallel is a common practice to increase the capacity of a battery bank, but it's not without its challenges, especially when dealing with batteries of ...





Contact Us

For catalog requests, pricing, or partnerships, please visit:
<https://woodgoods.pl>

Scan QR Code for More Information



<https://woodgoods.pl>