

Use inverter to connect battery





Overview

How to connect inverter to battery?

A fuse or circuit breaker should be installed as part of the process of how to connect inverter to battery. Double-check polarity: ensure the positive and negative terminals of the battery match the corresponding terminals on the inverter. Reversing polarity can cause irreversible damage to the system and present safety hazards.

What are inverter battery connections?

Inverter battery connections form the backbone of reliable power systems, ensuring efficient operation and safety. By following best practices and understanding the nuances of these connections, you can enhance system performance and longevity.

How do you use a car battery inverter?

Place the inverter on a stable surface 8. Connect the Positive battery clip to the battery positive terminal. 9. Connect the negative battery clip to a metal part of the vehicle frame. 10. Connect an appliance cord plug into the inverter or a USB power cord into the inverter. 11. Turn ON the inverter and use the appliance.

Do inverters need to be connected to batteries?

Connecting inverters to batteries is an important part of an off-grid power solution or backup power system, and the right connections ensure that the system runs efficiently.



Use inverter to connect battery



[How to Connect a Large or Small Inverter to a Battery](#)

Nov 28, 2017 · by: Justin Gray This blog answers questions about which inverters can be powered by 12V DC accessory outlets (cigarette lighter sockets) and which require wiring ...

[How to connect inverter to battery: a step-by-step guide ...](#)

Nov 20, 2024 · Common battery types include lead-acid, AGM, and lithium-ion batteries, all of which are integral to understanding how to connect inverter to battery for various use cases.

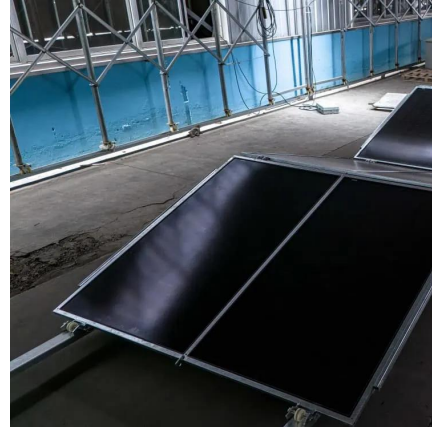


[How to connect inverter to battery: a step-by-step guide for ...](#)

Nov 20, 2024 · Common battery types include lead-acid, AGM, and lithium-ion batteries, all of which are integral to understanding how to connect inverter to battery for various use cases.

[How to Wire Inverter to Battery - No Sparks, Just Power](#)

Jul 18, 2025 · How to wire an inverter to a battery? Connect the inverter's positive and negative terminals to the battery, add a fuse on the positive line, and double-check polarity. Key ...



[Inverter Battery Connection: Essential Tips For Safe And ...](#)

Learn essential tips for safe and efficient inverter battery connection. Discover step-by-step guides, wiring techniques, and troubleshooting tips to optimize your power backup system's ...



[How to Connect an Inverter to a Battery: Step-by-Step Guide ...](#)

Mar 11, 2025 · Learn how to safely and efficiently connect an inverter to a battery with our step-by-step guide. Includes brand-specific tips for Solis, Deye, Megarevo, SRNE, and more. Perfect ...



[Hybrid Inverter and Lithium Batteries: Setup Guide and Best ...](#)

set up communication between lithium batteries and a hybrid inverter with our detailed step-by-step guide. Ensure optimal performance and longevity of your energy storage system by ...





Contact Us

For catalog requests, pricing, or partnerships, please visit:
<https://woodgoods.pl>

Scan QR Code for More Information



<https://woodgoods.pl>