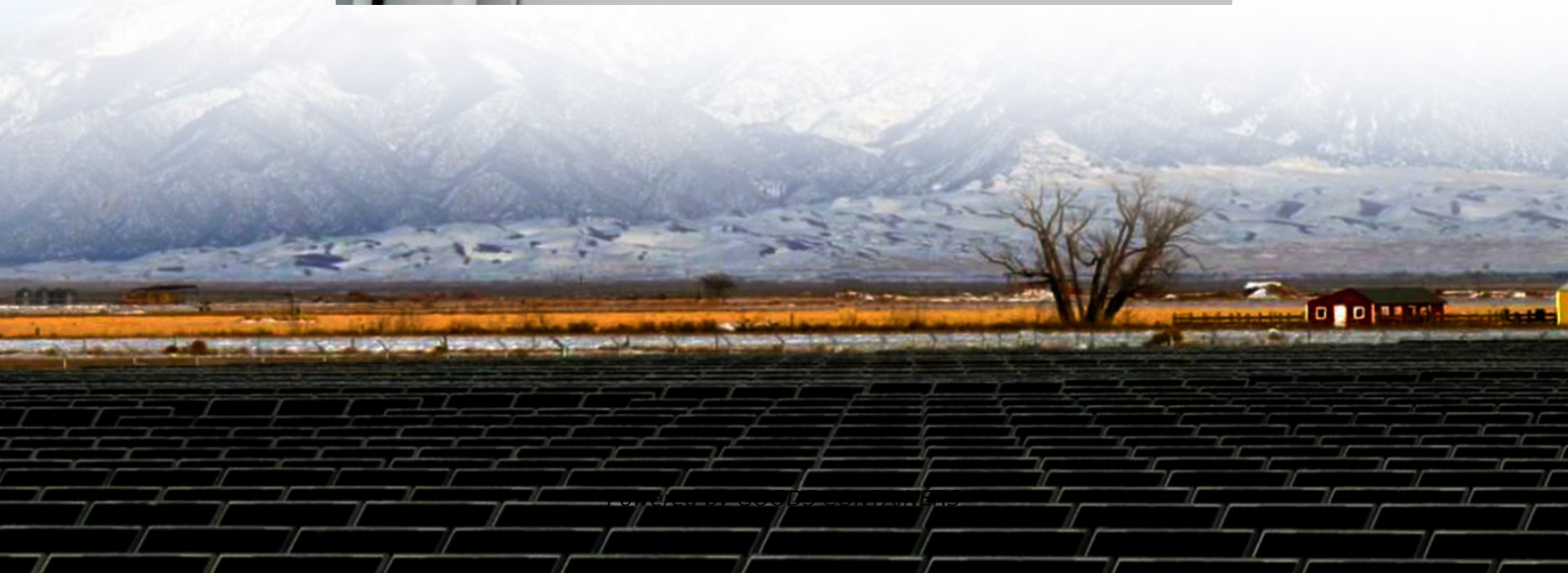


Voltage source inverter power-on sequence





Overview

What is a voltage source inverter?

Voltage source inverters (VSIs) are commonly used in uninterruptible power supplies (UPS) to generate a regulated AC voltage at the output. Control design of such inverter is challenging because of the unknown nature of load that can be connected to the output of the inverter.

What is a single phase voltage source inverter?

nce parameters.II. SINGLE PHASE VOLTAGE SOURCE INVERTERVoltage Source Inverters are used to transfer real power from a DC power source to an AC load. Usually, the DC source voltage is nearly constant and the amplitude of AC output volta.

What is a three phase voltage source inverter?

Three-phase voltage source inverter The Three-Phase Voltage Source Inverter block implements a three-phase voltage source inverter that generates neutral voltage commands for a balanced three-phase load. Configure the voltage switching function for continuous vector modulation or inverter switch input signals.

What is a voltage source inverter (VSI)?

An IMPORTANT NOTICE at the end of this TI reference design addresses authorized use, intellectual property matters and other important disclaimers and information. Voltage source inverters (VSIs) are commonly used in uninterruptible power supplies (UPS) to generate a regulated AC voltage at the output.



Voltage source inverter power-on sequence

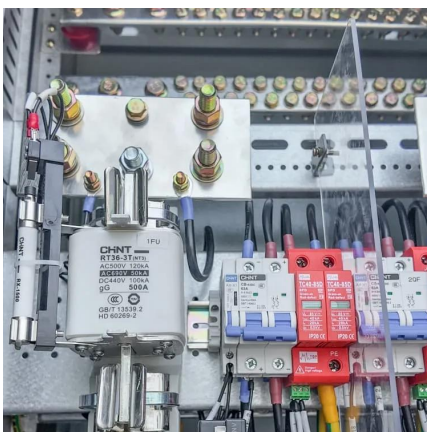


Startup sequence for a grid connected single phase voltage source inverter

Jun 21, 2017 · Startup is known as the most critical phase of any power electronic converter. Uncharged capacitors and resonance circuits cause high current spikes during startup that ...

[Analysis of Voltage Source Inverter and its Applications](#)

Jun 16, 2020 · II. SINGLE PHASE VOLTAGE SOURCE INVERTER Voltage Source Inverters are used to transfer real power from a DC power source to an AC load. Usually, the DC source ...



A simple and robust diagnosis method for open-circuit faults of voltage

Oct 5, 2023 · Voltage-source inverter is a significant part of power supply for various applications. In hard working conditions, the inverter is prone to failure, such as open-circuit (OC) faults, ...

[Model Predictive Control of LC-Filtered Voltage Source ...](#)

Abstract--Voltage source inverters with output LC filter enable a sinusoidal output voltage with low harmonics, suitable for islanded ac microgrid or uninterruptible power supply applications. ...



[2022 The 3rd International Conference on Power and ...](#)

Oct 1, 2023 · Under the influence of the unbalanced load, the negative and zero sequence components in the output voltage of the three-phase four-leg voltage source inverter (TPFL ...



[Voltage Source Inverter Reference Design \(Rev. E\)](#)

May 11, 2022 · Voltage source inverters (VSIs) are commonly used in uninterruptible power supplies (UPS) to generate a regulated AC voltage at the output. Control design of such ...



[Voltage Source Inverter \(VSI\) Operation, Electrical Academia](#)

1 day ago · The article provides an overview of Voltage Source Inverter (VSI) operation, discussing its working principle, waveform generation, switching patterns, and harmonic effects.





Contact Us

For catalog requests, pricing, or partnerships, please visit:
<https://woodgoods.pl>

Scan QR Code for More Information



<https://woodgoods.pl>