

What are the inverters that can be connected to batteries





Overview

How to connect a power inverter to a battery?

SP1000 Power One 14 AWG 1.4~1.6Nm SP2000 Power One 12 AWG 1.4~1.6Nm SP3000 Power One 10 AWG 1.4~1.6Nm You need to connect the cables of each inverter together. Take the battery cables for example: You need to use a connector or bus-bar as a joint to connect the battery cables together, and then connect to the battery terminal.

Why do I need to connect a battery to my inverter?

Properly connecting the battery to your inverter is essential for ensuring its efficient and reliable operation. However, issues with the battery connection can sometimes arise, causing problems such as power loss or device malfunction. In this article, we have discussed various troubleshooting tips to help you diagnose and resolve these issues.

What is a battery in an inverter?

They are extensively utilized in various settings such as ATMs, hospitals, laboratories, and traffic lights. The battery serves as a crucial component within the inverter system. It draws DC power from the battery and converts it into AC power through the inverter, enabling its usage with appliances.



What are the inverters that can be connected to batteries

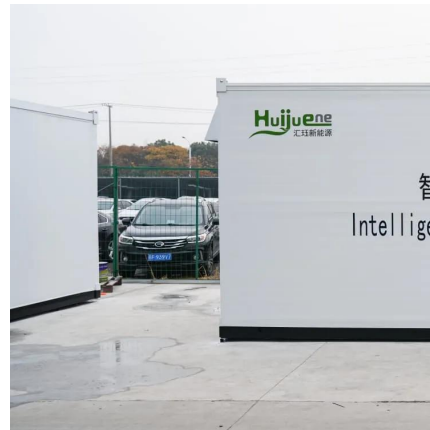


[Matching Solar Inverters with Battery Systems: What You ...](#)

In this in-depth guide, we break down everything you need to know about matching solar inverters with battery systems. From understanding different inverter types ...

[Battery Inverters: The Bridge Between Energy Conversion ...](#)

When installing a battery inverter, certain steps and precautions need to be followed. Firstly, you need to determine the installation location of the inverter to ensure that it ...



[Battery Inverters: The Bridge Between Energy ...](#)

When installing a battery inverter, certain steps and precautions need to be followed. Firstly, you need to determine the installation location of the inverter to ensure that it is well ventilated and ...



[Understanding Hybrid Inverters with Lithium ...](#)

Understanding Hybrid Inverters with Lithium Batteries In the realm of renewable energy, hybrid inverters paired with lithium batteries are becoming increasingly popular for both

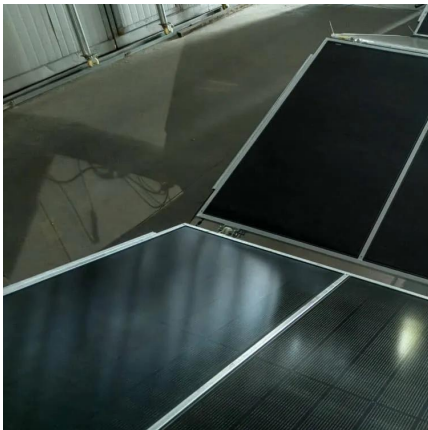


residential and commercial ...



[Compatibility of Lithium-Ion Batteries with Existing Inverters](#)

Learn how to seamlessly integrate lithium-ion batteries with existing inverters for efficient and reliable power solutions. Maximize energy storage with Invertek Energy.



[Understanding Hybrid Inverters with Lithium Batteries](#)

Understanding Hybrid Inverters with Lithium Batteries In the realm of renewable energy, hybrid inverters paired with lithium batteries are becoming increasingly popular for ...



[Importance of Compatibility Between Inverter ...](#)

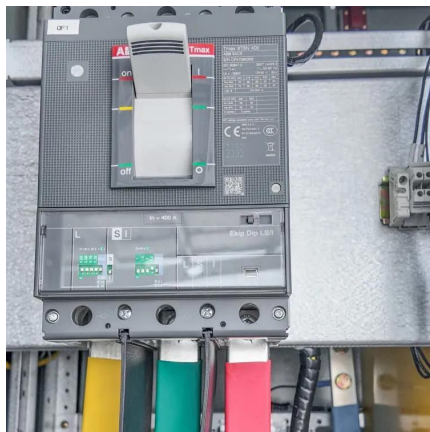
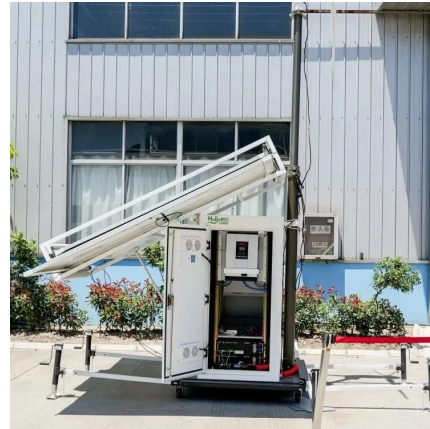
Better Monitoring and Control Modern inverters designed for lithium batteries often come equipped with smart technology that allows for better monitoring and control of energy use. These inverters can integrate ...





Compatibility of Lithium-Ion Batteries with ...

Learn how to seamlessly integrate lithium-ion batteries with existing inverters for efficient and reliable power solutions. Maximize energy storage with Invertek Energy.



Importance of Compatibility Between Inverter and Lithium Battery

Better Monitoring and Control Modern inverters designed for lithium batteries often come equipped with smart technology that allows for better monitoring and control of energy ...

How to Safely Connect a Battery to an ...

When we can't connect to the grid or experience an unexpected power outage, inverters take the DC power stored in batteries and process it through high-frequency switching components to form ...



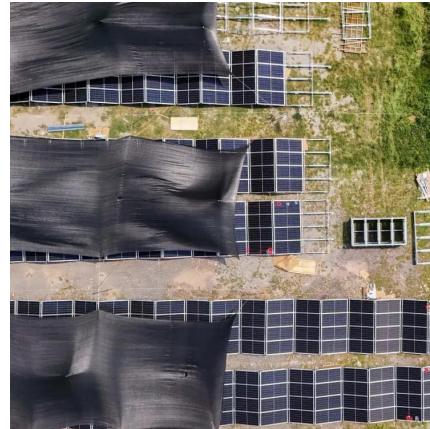
Can Lithium Batteries Work With Any Type of Inverter?

The Bottom Line While lithium batteries can't work with every inverter, most modern solar and off-grid inverters now offer lithium compatibility. For optimal performance in home ...



[Matching Solar Inverters with Battery ...](#)

In this in-depth guide, we break down everything you need to know about matching solar inverters with battery systems. From understanding different inverter types (string, hybrid, microinverters) to ...



[Can Lithium Batteries Work With Any Type of ...](#)

The Bottom Line While lithium batteries can't work with every inverter, most modern solar and off-grid inverters now offer lithium compatibility. For optimal performance in home energy stems, choose an ...

[How to Safely Connect a Battery to an Inverter: A Step-by ...](#)

When we can't connect to the grid or experience an unexpected power outage, inverters take the DC power stored in batteries and process it through high-frequency ...



[How Inverters Work with Batteries: A Beginner's Complete ...](#)

Grid-Tied Inverters: Grid-tied inverters connect solar panels directly to the electrical grid. They play a crucial role in net metering, where excess energy generated can be directed ...



[The ultimate guide to solar inverter and battery integration](#)

These inverters can manage both solar energy and battery storage systems, allowing users to store excess energy generated during the day for use at night or during power outages.



[The ultimate guide to solar inverter and battery integration](#)

These inverters can manage both solar energy and battery storage systems, allowing users to store excess energy generated during the day for use at night or during ...

Contact Us

For catalog requests, pricing, or partnerships, please visit:
<https://woodgoods.pl>

Scan QR Code for More Information



<https://woodgoods.pl>