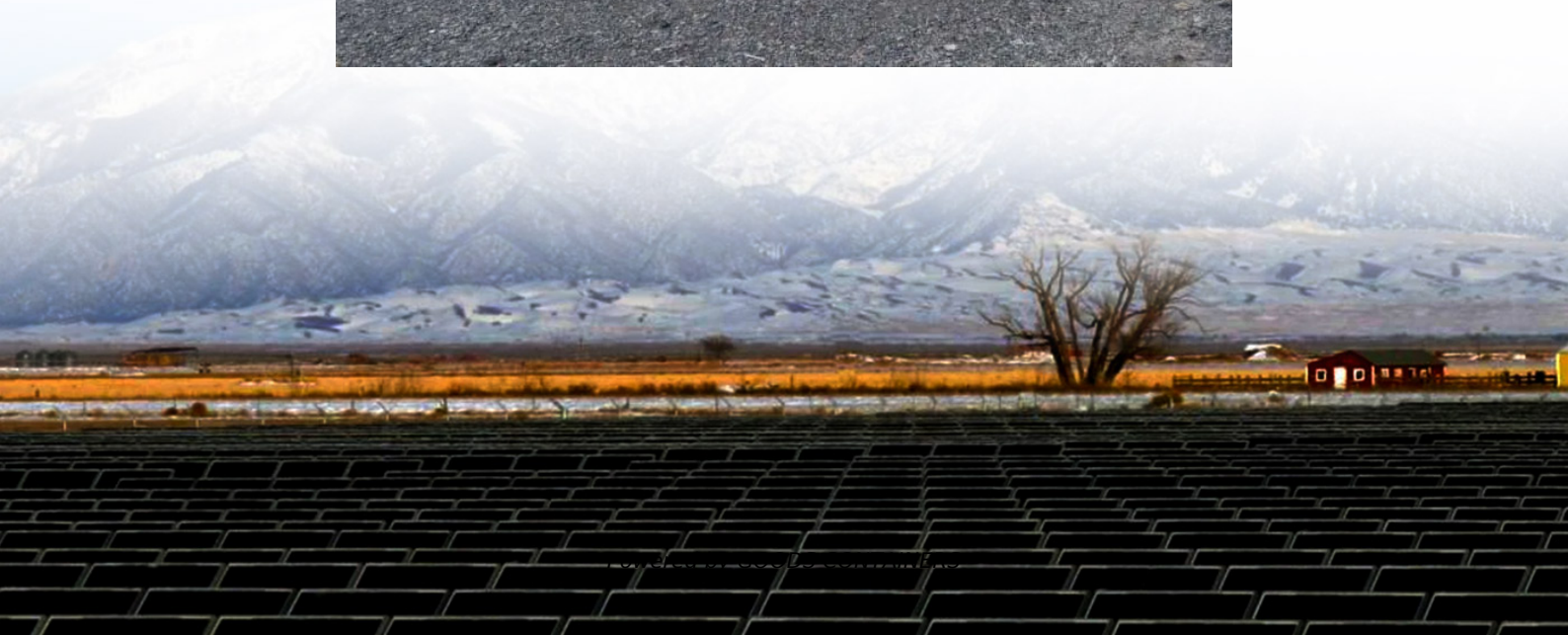


What does inverter nb600r24wp mean





Overview

What is a power inverter?

The term "inverter" essentially refers to a circuit that converts the current from DC to AC (power inverter circuit), but it can also refer to a power inverter device used in home appliances, such as air conditioners and washing machines. Home appliances are not the only examples that benefit from inverter devices.

How do you classify an inverter based on its power output?

Using the CEC efficiency, the input power to the inverter must be $P_{IN} = P_{OUT} / \text{CEC Efficiency} = 3,300 \text{ W} / 0.945 = 3,492 \text{ W}$. Inverters can be classed according to their power output. The following information is not set in stone, but it gives you an idea of the classifications and general power ranges associated with them.

What are inverter specifications?

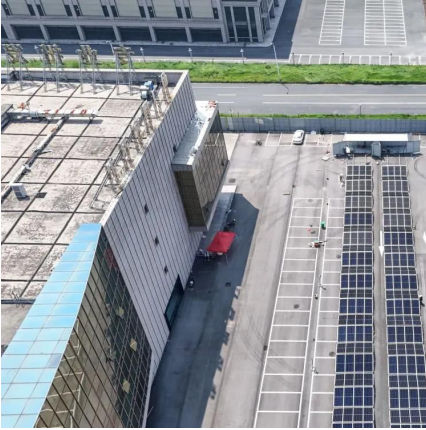
Inverter specifications are technical information that describes an inverter's capabilities, characteristics, and limitations. They guide users in choosing an inverter that suits their needs, whether for homes, solar power systems, electronic vehicles, boats, or other applications.

How much power does an inverter use?

An inverter uses a small amount of energy during the conversion process. The difference between the input power and the output power is expressed in percentages. The efficiency of modern inverters is more than 92 %. This means that a maximum of 8 % of the power consumption is used to convert battery voltage to 230V/50Hz.



What does inverter nb600r24wp mean



[Frequently Asked Questions about Inverters](#)

How Much Battery Capacity Do I Need with An Inverter? How Much Power Does An Inverter consume? Is There A Stand-By Switch on The Inverter? Can I Power A Computer with An Inverter? Can A Microwave Be Powered with An Inverter? Are There Any Appliances That Cannot Be Powered by An Inverter? How Much Current Will An Inverter Draw from My Batteries? How Thick Should My Battery Cables be? Does An Inverter Need A Lot of Ventilation? Can An Inverter Be Used in Parallel with The Generator Or The Grid? An inverter needs very little ventilation - two approx. 60 cm² ventilation openings are usually enough. Larger inverters, from 1500 W upwards, need twice that size. Inverters used in high ambient temperatures, and those expected to be operating at full capacity for a long period, require openings that are four times as large. See more on mastervolt Electrical Academia

Inverter Specifications and Data Sheet

2 days ago · The article provides an overview of inverter functions, key specifications, and common features found in inverter systems, along with ...

[Power Inverters : A simple explanation \(how-to understand ...](#)

You're interested in power inverters, but don't want to read my lengthy blogs detailing all of the nuances I get it. This blog will get you the correct inverter for your needs, just simplified.



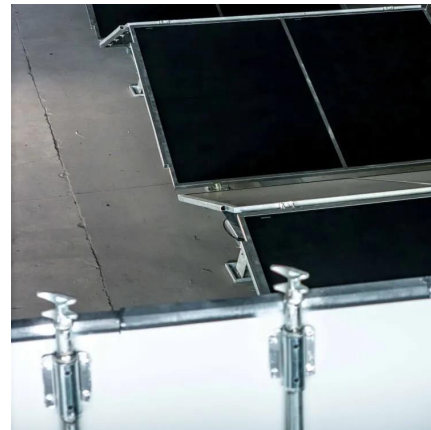


[How To Read And Interpret An Inverter Specification](#)

4 days ago · Inverter specifications are technical information that describes an inverter's capabilities, characteristics, and limitations. They guide users in choosing an inverter that suits ...

[What Will a 600 Watt Power Inverter Run?](#)

Jul 21, 2024 · An inverter is a device that can convert DC power into AC power and then supply power to electrical appliances. 600 watt, 12 volt power inverters are commonly used to run ...



[What is a power inverter? , Tech , Matsusada Precision](#)

Aug 31, 2021 · Basic Technical Explanation of power inverter - Power Inverter circuit and power inverter device, Frequency and Rotation Speed, Device configuration, Smart Grids.

Contact Us

For catalog requests, pricing, or partnerships, please visit:
<https://woodgoods.pl>



Scan QR Code for More Information



<https://woodgoods.pl>