

# What is base station dual-route communication like





## Overview

---

What are base stations & how do they work?

Base stations are the critical components that enable mobile phones and other devices to connect to cellular networks. Here's how they work in a typical mobile network: Signal Transmission and Reception: Mobile devices communicate with the nearest base station via radio waves.

Why are base stations important in cellular communication?

Base stations are important in the cellular communication as it facilitate seamless communication between mobile devices and the network communication. The demand for efficient data transmission are increased as we are advancing towards new technologies such as 5G and other data intensive applications.

What is a base station in a cellular network?

It acts as the intermediary between the mobile device and the broader telecommunications network, facilitating both data transfer and voice communication. In cellular networks, a base station typically consists of antennas, a transmitter/receiver system, and a base station controller (BSC).

What is a base station in telecommunications?

In telecommunications, a base station is a fixed transceiver that serves as the main communication point for one or more wireless mobile client devices. It not only connects wireless devices to each other but also links them to other networks or devices, often through dedicated high-bandwidth wired or fiber optic connections.



## What is base station dual-route communication like

---



### [5G Network Evolution and Dual-mode 5G Base Station](#)

Dec 14, 2020 · The fifth generation (5G) networks can provide lower latency, higher capacity and will be commercialized on a large scale worldwide. In order to efficiently deploy 5G networks ...

### **Understanding Base Stations: The Backbone of Wireless Communication**

Jan 6, 2025 · In today's digital age, reliable and high-speed communication is more essential than ever. Whether it's for mobile phones, internet services, or IoT (Internet of Things) devices, ...



### [Base Stations and Cell Towers: The Pillars of Mobile ...](#)

May 16, 2024 · Base stations and cell towers are critical components of cellular communication systems, serving as the infrastructure that supports seamless mobile connectivity. These ...



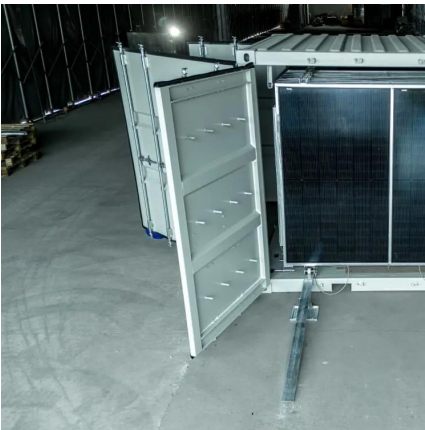
### [5G+LTE BBU\\_XLink\(TM\) 4+5G Distributed Base Station...](#)

May 9, 2025 · The 5G+LTE dual-mode BBU is the baseband processing unit of the SageRAN`s XLink(TM) 5G+LTE distributed small cell solution. It is a small and low-power indoor distributed ...



### [Dual Connectivity in 5G: Why Two Connections are Better ...](#)

Sep 28, 2025 · In Standalone 5G (SA), the option is NR-DC (New Radio Dual Connectivity), where two 5G base stations work together. One base station connects to the 5G core and ...



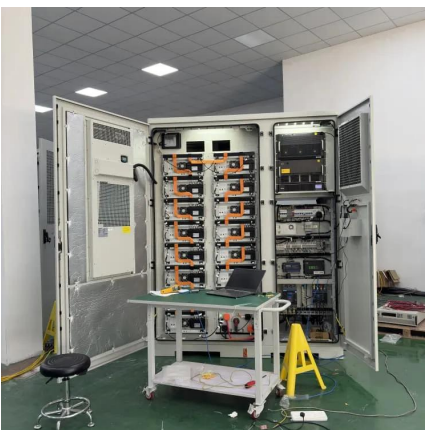
### [Understanding Base Stations in Mobile Communication](#)

Nov 21, 2025 · A base station is a fixed point that enables wireless communication between mobile devices and the network. These stations consist of radio transceivers, antennas, and a ...



### [Shanghai accelerates dual-megabits network construction ...](#)

Aug 13, 2024 · Shanghai is set to revolutionize its telecommunications landscape by embarking on an ambitious project to establish a dual-megabits network, with plans to construct a total of ...





## Contact Us

---

For catalog requests, pricing, or partnerships, please visit:  
<https://woodgoods.pl>

### Scan QR Code for More Information



<https://woodgoods.pl>