

What is the power of the inverter





Overview

How to use a power inverter correctly?

To use a power inverter properly, ensure the DC input voltage is the same as the battery voltage. Every inverter has a specific DC voltage value it can be connected to, such as 12 Volts or 24 Volts. The battery voltage should match this DC input voltage value of the power inverter.

Is an inverter a generator or a converter?

The inverter is a static device. It can convert one form of electrical power into other forms of electrical power. But it cannot generate electrical power. Hence the inverter is a converter, not a generator. This document contains a presentation on transformers given by Dr. B. Gopinath, Professor of Electrical and Electronics Engineering.

How does a portable inverter work?

You just connect the inverter to a battery, and plug your AC devices into the inverter . and you've got portable power . whenever and wherever you need it. The inverter draws its power from a 12 Volt battery (preferably deep-cycle), or several batteries wired in parallel.



What is the power of the inverter



[How do inverters convert DC electricity to AC?](#)

Mar 6, 2025 · What is an inverter? One of Tesla's legacies (and that of his business partner George Westinghouse, boss of the Westinghouse Electrical Company) is that most of the ...

[What Is a Power Inverter and How Does It Work?](#)

Apr 28, 2025 · Discover the key differences between DC and AC electricity and the crucial role of power inverters in renewable energy systems. Learn about inverter components, types, ...



[Power Inverters: What Are They & How Do They Work?](#)

Dec 17, 2019 · What is an Inverter? An inverter (or power inverter) is defined as a power electronics device that converts DC voltage into AC voltage. While DC power is common in ...

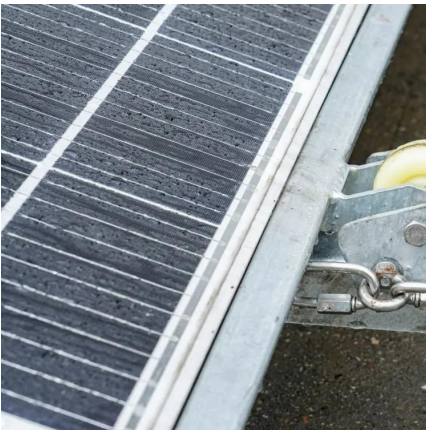
[What is a power inverter? , Tech , Matsusada Precision](#)

Aug 31, 2021 · Basic Technical Explanation of power inverter - Power Inverter circuit and power inverter device, Frequency and Rotation Speed, Device configuration, Smart Grids.



[What Is a Power Inverter? , Types, Capacity, Uses, & How It ...](#)

Jul 6, 2022 · A power inverter is a device that uses electrical circuits to change the direction of DC power flow, making it alternate like AC power. These oscillations are harsh and produce a ...



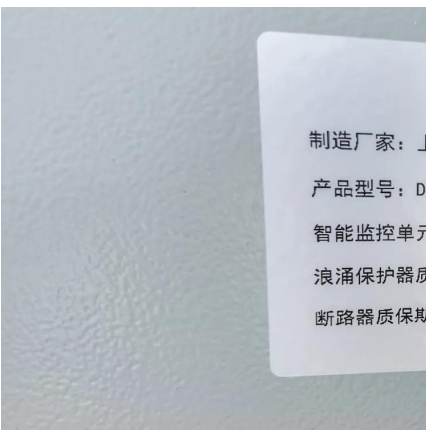
[How Does a Power Inverter Work? An Easy Explanation for ...](#)

Jun 17, 2025 · A power inverter converts DC to AC, letting batteries or solar panels run household devices. Learn how inverters work, their types, sizing tips, installation guide, and what to ...



[Inverter Specifications and Data Sheet](#)

1 day ago · The article provides an overview of inverter functions, key specifications, and common features found in inverter systems, along with an example of power calculations and inverter ...





Contact Us

For catalog requests, pricing, or partnerships, please visit:
<https://woodgoods.pl>

Scan QR Code for More Information



<https://woodgoods.pl>