

What is the voltage of 1mw solar panels connected in series





Overview

How much power does a solar photovoltaic module have?

A Solar Photovoltaic Module is available in a range of 3 WP to 300 WP. But many times, we need power in a range from kW to MW. To achieve such a large power, we need to connect N-number of modules in series and parallel. A String of PV Modules When N-number of PV modules are connected in series.

How many solar panels are needed for a 24V Solar System?

Solar panel series and parallel connection diagram with four panels. Showing positive to negative wiring diagram for series. It means, for a balanced and efficient 24V solar system, you need at least 4 panels, configured as 2S2P (2 panels in Series, then 2 such strings in Parallel).

What are the basics of solar panel wiring?

In conclusion, understanding the basics of solar panel wiring is essential for creating an efficient and reliable solar power system. Whether you choose series wiring, where the voltages of individual panels add up, or parallel wiring, where currents sum while voltage remains constant, each configuration offers unique benefits.

How many solar panels can I connect in series?

The number of solar panels you can safely connect in series depends on the voltage limits of your MPPT charge controller or hybrid inverter. There are 2 key boundaries to consider: To ensure your system starts charging efficiently, the series voltage must reach at least the MPPT's start voltage.



What is the voltage of 1mw solar panels connected in series



[Series, Parallel & Series-Parallel Connection of Solar Panels](#)

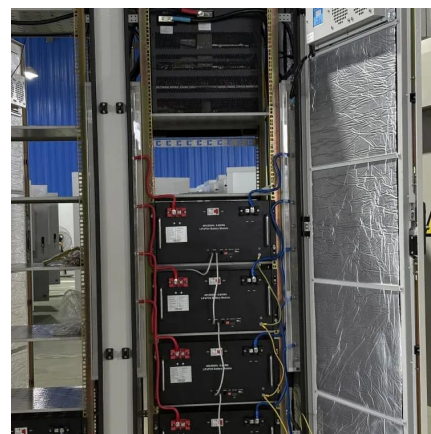
What Is A Solar Photovoltaic array?Series Connection of ModulesParallel Connection of ModulesSeries - Parallel Connection of Modules-Mixed CombinationSometimes the system voltage required for a power plant is much higher than what a single PV module can produce. In such cases, N-number of PV modules is connected in series to deliver the required voltage level. This series connection of the PV modules is similar to that of the connections of N-number of cells in a module to obtain the required vo See more on electricaltechnology nenpower

How many volts are connected in series with solar panels?

Mar 6, 2024 · The voltage connected in series with solar panels can vary widely based on the specific configuration and applications, but several key points should be noted: 1) **Solar ...

[How Do Solar Panels Connect In Series Vs Parallel?](#)

5 days ago · Solar panels connected in series increase system voltage (VOC additive), while parallel connections boost current (ISC additive). For example, two 40V/10A panels in series ...



[How many volts are connected in series with solar panels?](#)

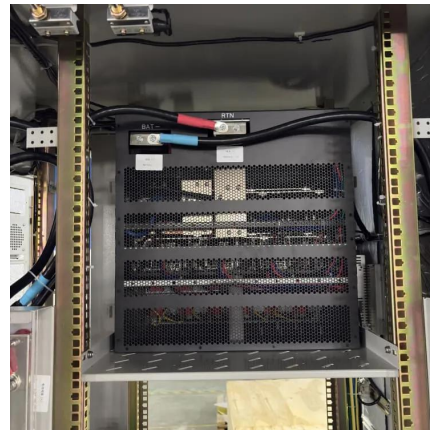
Mar 6, 2024 · The voltage connected in series



with solar panels can vary widely based on the specific configuration and applications, but several key points should be noted: 1) **Solar ...

What is a Series or Parallel Connection in Solar Panels?

Aug 29, 2025 · A series connection links solar panels end-to-end. Technically, you connect the positive terminal of one panel directly to the negative terminal of the next. Voltage Behavior: ...



Series, Parallel & Series-Parallel Connection of Solar Panels

3 days ago · What is a Solar Photovoltaic Array? A Solar Photovoltaic Module is available in a range of 3 WP to 300 WP. But many times, we need power in a range from kW to MW. To ...

Contact Us

For catalog requests, pricing, or partnerships, please visit:
<https://woodgoods.pl>



Scan QR Code for More Information



<https://woodgoods.pl>