

What power supply does the wireless network base station use





Overview

What is a base station power supply?

This acts as the “blood supply” of the base station, ensuring uninterrupted power. It includes: AC distribution box: Distributes mains power and offers surge protection. Switch-mode power supply: Converts and stabilizes power while managing DC output. Battery banks: Serve as backup power to keep systems running during outages. 3.

What is a base station connection diagram?

The connection diagram provides a clear overview of how the main base station equipment operates within the network. Surrounding this central "brain" are the “Four Guardians” that ensure seamless functionality: Power Supply: Provides a steady and uninterrupted energy source to keep the equipment operational.

What are the benefits of a base station?

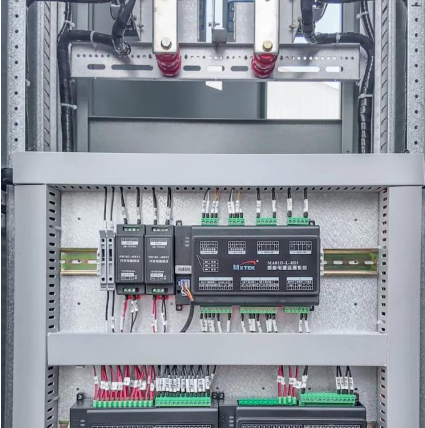
Base stations, while small in structure, are equipped with everything necessary to operate independently. They ensure: Protection against environmental factors like wind, rain, and lightning. Uninterrupted power supply through robust systems and backup solutions. Efficient signal transmission to connect users to the broader network.

Is TP-Link a good wireless base station?

TP-LINK's 5GHz 300Mbps * Outdoor Wireless Base Station is specifically designed to provide an effective solution for outdoor wireless networking applications. With its centralized management platform and high degree of flexibility, it is the ideal choice for providing point-to-point, point-to-multipoint, and outdoor Wi-Fi coverage.



What power supply does the wireless network base station use

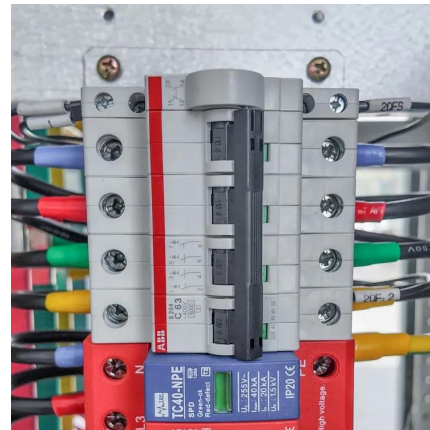


The power supply design considerations for ...

The 5G transmission is moving toward millimeter wave (mmWave) spectrum spanning up to 71 GHz to achieve the speeds that differentiates it from 4G. At the same time, 5G networks are competing ...

5g base station power supply solution

The power supply device has a built-in wireless monitoring unit, which can access the mobile monitoring network in the way of 4G or NB-IOT; it can connect the existing mainstream smart ...



Selecting the Right Supplies for Powering 5G Base Stations

These tools simplify the task of selecting the right power management solutions for these devices and, thereby, provide an optimal power solution for 5G base stations components.



Power Supply Solutions for Wireless Base Stations Applications

The telecommunications infrastructure and equipment is becoming increasingly more sophisticated, as wireless technology evolves, so does the need for increasingly more reliable ...



[Mobile 5G base station power supply solution](#)

A 5G network base-station connects other wireless devices to a central hub. A look at 5G base-station architecture includes various equipment, such as a 5G base station power ...



[5G macro base station power supply design strategy and ...](#)

For macro base stations, Cheng Wentao of Infineon gave some suggestions on the optimization of primary and secondary power supplies. "In terms of primary power supply, we ...



[Reliable Power Supply Solutions for Base Stations](#)

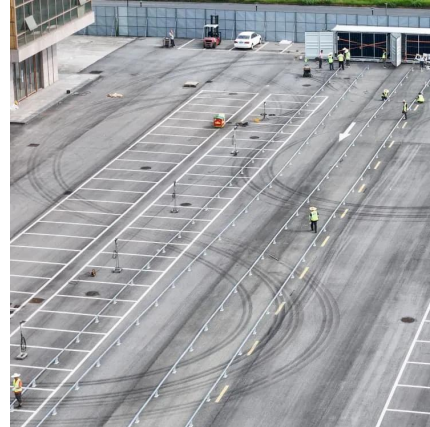
Base Station Power Supply A base station is a fixed communications location which can receive and transmits signals and is part of a network's wireless telephone system. It allows mobile ...





[5GHz 300Mbps Outdoor Wireless Base ...](#)

5GHz 300Mbps Outdoor Wireless Base Station Enterprise Level Hardware Design To maximize performance and stabilize long distance wireless transmission, the Pharos Series is built with Qualcomm Atheros ...



[The power supply design considerations for 5G base stations](#)

The 5G transmission is moving toward millimeter wave (mmWave) spectrum spanning up to 71 GHz to achieve the speeds that differentiates it from 4G. At the same time, ...

[Complete Guide to 5G Base Station ...](#)

Switch-Mode Power Supply: This critical component performs rectification, filtering, and voltage stabilization, converting AC power into DC power. DC Power Output: The processed DC power is supplied to main ...



[Complete Guide to 5G Base Station Construction , Key Steps, ...](#)

Switch-Mode Power Supply: This critical component performs rectification, filtering, and voltage stabilization, converting AC power into DC power. DC Power Output: The ...



Contact Us

For catalog requests, pricing, or partnerships, please visit:
<https://woodgoods.pl>

Scan QR Code for More Information



<https://woodgoods.pl>