

# **What size inverter is best for a 50a battery**





## Overview

---

What is the recommended battery size for an inverter?

Interpreting Results: Once you input the required data, the calculator will generate the recommended battery size in ampere-hours (Ah). For instance, if your power consumption is 500 watts, the usage time is 4 hours, and the inverter efficiency is 90%, the calculator might suggest a battery size of approximately 222 Ah.

How much battery should a 500 watt inverter use?

For instance, if your power consumption is 500 watts, the usage time is 4 hours, and the inverter efficiency is 90%, the calculator might suggest a battery size of approximately 222 Ah. Practical Tips: Ensure all input values are accurate to avoid skewed results.

What wattage Inverter should I use?

Match the inverter's continuous wattage rating to the battery's discharge capacity. For a 12V 200Ah battery (2.4kWh), a 2000W inverter is ideal. Formula:  $\text{Inverter Wattage} \leq (\text{Battery Voltage} \times \text{Ah Rating} \times 0.8)$ . Factor in surge power needs but prioritize sustained loads.

What size inverter for a 12V 200Ah battery?

For a 12V 200Ah battery (2.4kWh), a 2000W inverter is ideal. Formula:  $\text{Inverter Wattage} \leq (\text{Battery Voltage} \times \text{Ah Rating} \times 0.8)$ . Factor in surge power needs but prioritize sustained loads. Always check the battery's max discharge rate (C-rate) to avoid exceeding safe limits. When sizing for 24V or 48V systems, recalculate using the higher voltage.



## What size inverter is best for a 50a battery

---

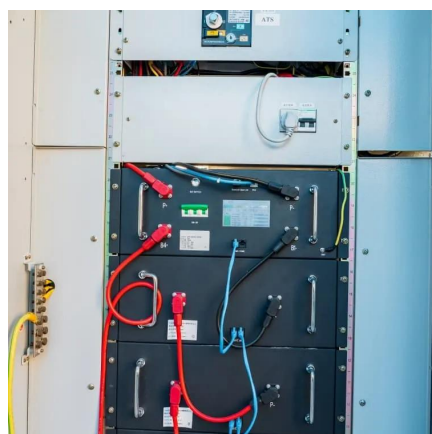
### What Size Inverter Do I Need? A Comprehensive Guide to Inverter ...

Oct 29, 2025 · Additional Resources How to Size a Home Power Inverter - SRNE Solar Inverter Basics Explained - This comprehensive guide empowers you to select the right ...



### [How to Choose the Right Size Solar Inverter: Step-by-Step ...](#)

Jul 15, 2025 · Wondering what size solar inverter do I need for your solar system? This guide walks you through calculating inverter size based on panel capacity, power usage, and safety ...

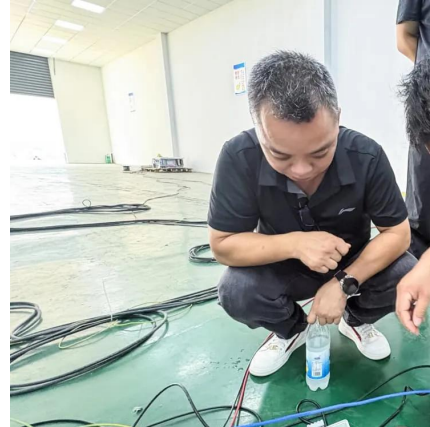


### [What Size Inverter Do I Need ?A Complete Guide to ...](#)

Jun 12, 2025 · Discover how to select the perfect inverter size for your solar or backup power system. Learn to calculate power requirements, account for surge loads, match battery ...

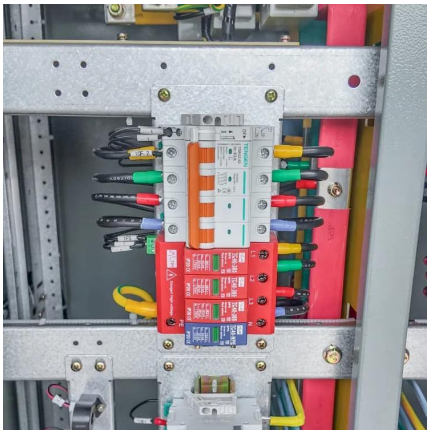
### [Calculate Battery Size For Any Size Inverter \(Using Our ...](#)

Mar 3, 2023 · Pairing a right size capacity battery for an inverter can be a bit confusing for most the beginners So I have made it easy for you, use the calculator below to calculate the battery ...



### [Calculate Battery Size for Inverter Calculator](#)

Mar 14, 2025 · The Calculate Battery Size for Inverter Calculator helps you determine the optimal battery capacity needed to support your inverter system. By inputting critical parameters such ...



### [Sizing Your Solar Inverter for Optimal Battery Runtime](#)

Oct 21, 2025 · Stop wasting backup power! Sizing your solar inverter correctly is key to maximizing battery runtime. This guide provides the exact load calculation and sizing formula ...



### [Calculate Battery Size For Any Size Inverter \(Using Our...](#)

Inverter Battery Size Calculator  
How to Calculate Battery Capacity For Inverter  
How Many Batteries For 3000-Watt Inverter  
Battery Size Chart For Inverter  
Battery to Inverter Wire Size Chart  
To calculate the battery capacity for your inverter use this formula  
$$\text{Inverter capacity (W)} \times \text{Runtime (hrs)} / \text{solar system voltage} = \text{Battery Size} \times 1.15$$
  
Multiply the result by 2 for lead-acid type battery, for lithium battery type it would stay the same  
Example Let's suppose you have a





3000-watt inverter with an 85% efficiency rate and your daily runtime See more on dotwatts Climatebiz

## The Only Inverter Size Chart You'll Ever Need - Climatebiz

Sep 25, 2023 · We have created a comprehensive inverter size chart to help you select the correct inverter to power your appliances.

### [Can an Inverter Be Too Big for Your Battery System?](#)

How to Calculate the Right Inverter Size for Your Battery Match the inverter's continuous wattage rating to the battery's discharge capacity. For a 12V 200Ah battery (2.4kWh), a 2000W inverter ...



### **Determining the Solar and Inverter Size Needed to Charge a Battery**

Jul 29, 2025 · If your solar array can deliver 50A, but your inverter charger only accepts 30A, that limits charging efficiency--an argument for matching proper Size components.

## Contact Us

---

For catalog requests, pricing, or partnerships, please visit:  
<https://woodgoods.pl>



## Scan QR Code for More Information



<https://woodgoods.pl>