

When charging a flow battery





Overview

How do flow batteries work?

Charging and discharging are realized by means of a reversible electrochemical reaction between two liquid electrolyte reservoirs. Flow batteries are often called redox flow batteries, based on the redox (reduction-oxidation) reaction between the two electrolytes in the system. Fig. 9. Flow battery system .

What is the flow of charges when a battery is charging?

Figure 9 3 3 illustrates the flow of charges when the battery is charging. During charging, energy is converted from electrical energy due to the external voltage source back to chemical energy stored in the chemical bonds holding together the electrodes. Again, the flow of both electrons and ions, not just electrons, must be considered.

How do flow batteries maintain charge neutrality?

The charge neutrality condition for the each half-cell is maintained by a selective ion exchange membrane separating the anode and cathode compartments. The key differentiating factor of flow batteries is that the power and energy components are separate and can be scaled independently.

How does a flow battery differ from a conventional battery?

In contrast with conventional batteries, flow batteries store energy in the electrolyte solutions. Therefore, the power and energy ratings are independent, the storage capacity being determined by the quantity of electrolyte used and the power rating determined by the active area of the cell stack.



When charging a flow battery

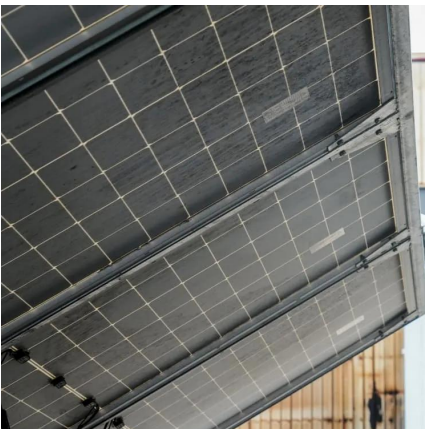


Advancing Flow Batteries: High Energy Density and Ultra-Fast Charging

Dec 17, 2024 · A high-capacity-density (635.1 mAh g^{-1}) aqueous flow battery with ultrafast charging ($<5 \text{ mins}$) is achieved through room-temperature liquid metal-gallium alloy anode and ...

[BU-210b: How does the Flow Battery Work?](#)

Oct 22, 2021 · Figure 1: Flow Battery Electrolyte is stored in tanks and pumped through the core to generate electricity; charging is the process in reverse. The volume of electrolyte governs ...



[Introduction to Flow Batteries: Theory and Applications](#)

Aug 3, 2016 · The charge neutrality condition for the each half-cell is maintained by a selective ion exchange membrane separating the anode and cathode compartments. The key differentiating ...

[How does battery charging work? / How does a battery charge?](#)

Oct 4, 2025 · A battery charger does this by passing an electrical current through the cell or cells of the battery. This electrical flow attracts the ions towards the anode plate.



Contact Us

For catalog requests, pricing, or partnerships, please visit:
<https://woodgoods.pl>

Scan QR Code for More Information



<https://woodgoods.pl>