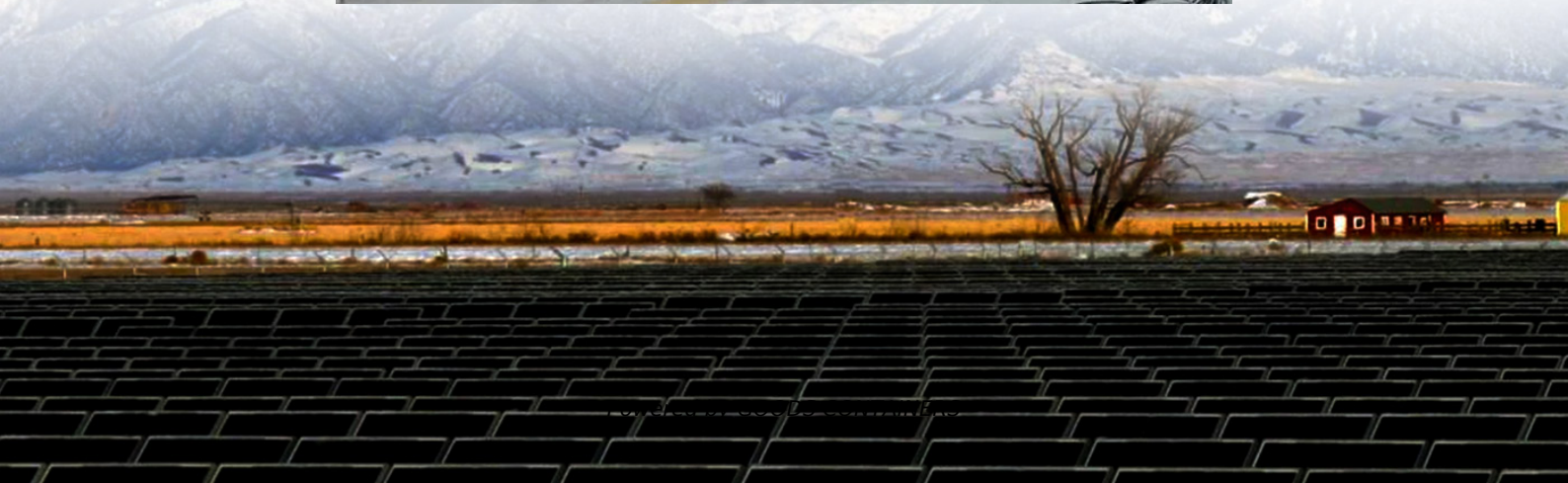


# Zhong African single-phase 110v industrial frequency inverter





## Overview

---

What is the operating temperature of a single phase inverter?

With humidity 90%RH, single phase inverter operating temperature (-10°C, 40°C). The single phase output frequency drives are widely used to control the speed of motors in various equipment such as pumps, ventilation systems, elevators, machine tool drives, etc.

What is a variable frequency inverter?

The variable frequency drive single phase to 3 phase is usually applied in CNC machine tools, water pumps, fans, air conditioners, washing machines, etc. 1hp (0.75kw) frequency inverter, single phase 120v input, 1 phase and 3 phase 220v output.

How many Hz is a 3 kW inverter?

2.2kW 3hp frequency inverter with rated current 17A for sale, input voltage single phase AC 220V±15%, input frequency 47~63Hz. With a start frequency of 0.4Hz~20.00Hz, the inverter's speed adjustment range reaches 1:50.

What is a 3 hp variable frequency drive inverter?

2.2 kW (3 hp) frequency drive inverter, single phase 120v input, single phase and three phase 220v output, with IP20 protection and RS485 communication interface. 3 hp variable frequency drive inverter can run 1ph/3ph AC motor via 120v power supply, work at (-10°C, 40°C).



## Zhong African single-phase 110v industrial frequency inverter

---

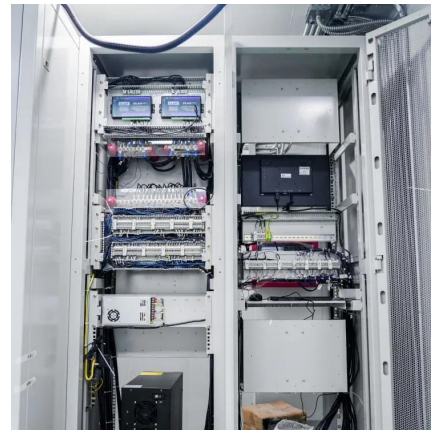


### [1 phase input 1 phase output frequency inverter](#)

Oct 13, 2024 · A 1-phase input, 1-phase output frequency inverter is a critical device used to convert single-phase AC power into variable-frequency AC output. These inverters are widely ...

### [Zhong African single-phase 110v industrial frequency inverter](#)

What is a single phase frequency inverter? Single phase 2.2 kW frequency inverter, AC 220/230/240 volt single phase input to single phase 220/240 volt output, high start torque and ...



### [Best Single Phase Frequency Inverters for Efficient Motor ...](#)

Oct 6, 2025 · Most single phase inverters convert 110V or 220V single-phase input into 220V 3-phase output -- vital for suitable motor operation. Frequency Range and Speed Control A ...



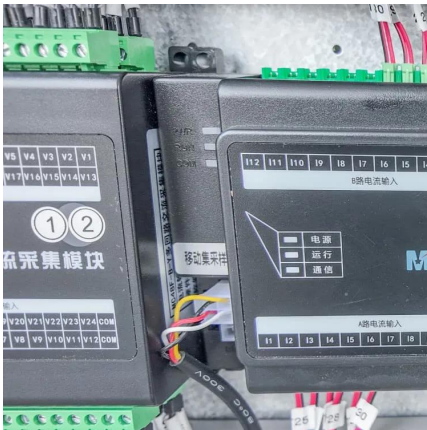
### **110V Single Phase Input 3 Phase Output 0.4kw-7.5kw Vector Inverter**

Aug 19, 2025 · About this Item This vector inverter offers exceptional performance with a power range of 0.4kw to 7.5kw, ensuring motor speed control. Designed for 110V single phase input ...



### Top 10 VFD 0.4kw VFD Single Phase 110V Inverter AC Drive for Single

Dec 5, 2025 · Top 10 VFD 0.4kw VFD Single Phase 110V Inverter AC Drive for Single Phase Motor, Find Details and Price about VFD VFD Drive from Top 10 VFD 0.4kw VFD Single ...



## Contact Us

For catalog requests, pricing, or partnerships, please visit:  
<https://woodgoods.pl>

**Scan QR Code for More Information**



<https://woodgoods.pl>